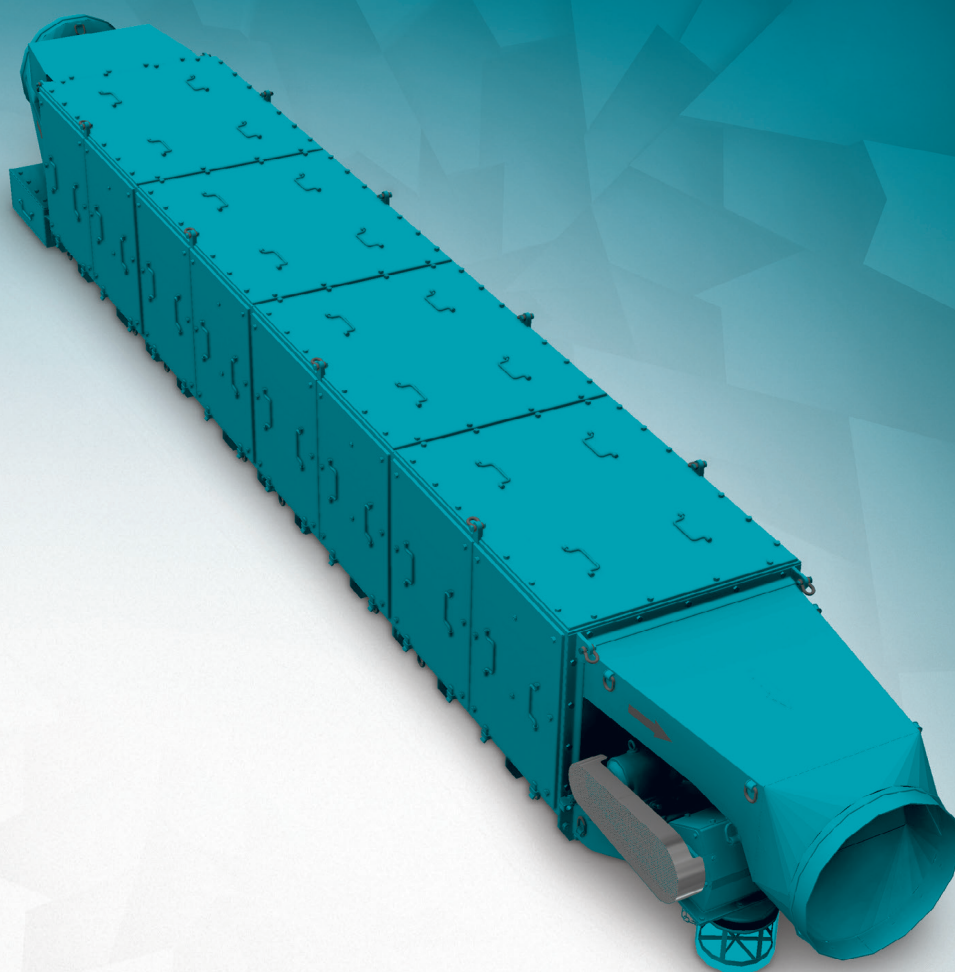




OTK ENIGMA

DRY-TYPE DUST COLLECTOR



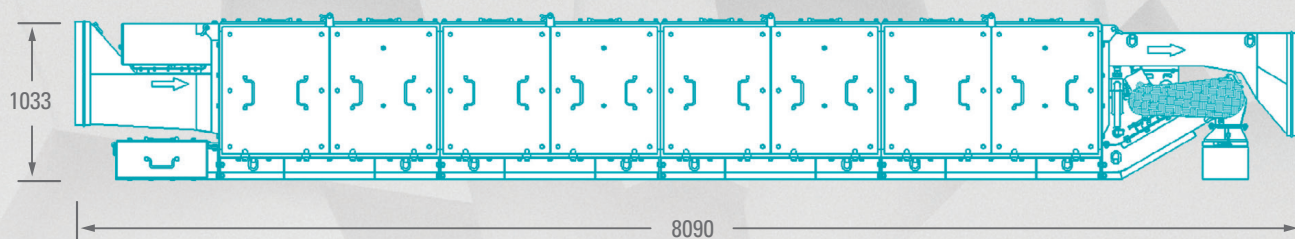
Fabric filter dust collector OTK-ENIGMA is designed to separate dust grains from the air during transition of dusted agent through fabric filter material.

High efficiency and reliability of dust collector application is guaranteed by measurement and control system cooperating with filter cleaning system. Application of renewable modules in filtration unit significantly reduces operating costs of the device. Modular construction of dust collector allows to adjust given parameters (e.g. cleaning efficiency) to conditions observed at workplace environment.

Dust collector OTK-ENIGMA is adapted for both stationary and mobile application (e.g. suspended above belt feeder) for example with fans ZWLP-SIGMA 900/P. Dust collector is compatible to cooperate with both flexible and rigid air ducts.

OTK-ENIGMA

DRY-TYPE DUST COLLECTOR

DIAGRAM**DEVICE RESISTANCE – RANGE OF WORK****TECHNICAL CHARACTERISTICS**

NOMINAL CAPACITY OF CLEAN AIR FLOW [m³/s]	8.4	PNEUMATIC SYSTEM'S AIR CHARACTERISTICS	≥ grade V
DEVICE'S CAPACITY RANGE [m³/s]	6 – 7.7	MAX. PARTICLE SIZE [μm]	40
ACCEPTABLE PRESSURE RANGE [Pa]	1700 – 2050	MAX. PARTICLES CONCENTRATION [mg/m³]	10
ACCEPTABLE FILTERS' STATIC PRESSURE [Pa]	3500	MAX. OIL CONCENTRATION [mg/m³]	25
CLEANING EFFICIENCY [%]	99.8	MAX. WATER CONTENT [g/m³]	7.8
FILTERS' WORKING TIME [days]	60 – 180 (depending on load and workplace conditions)		